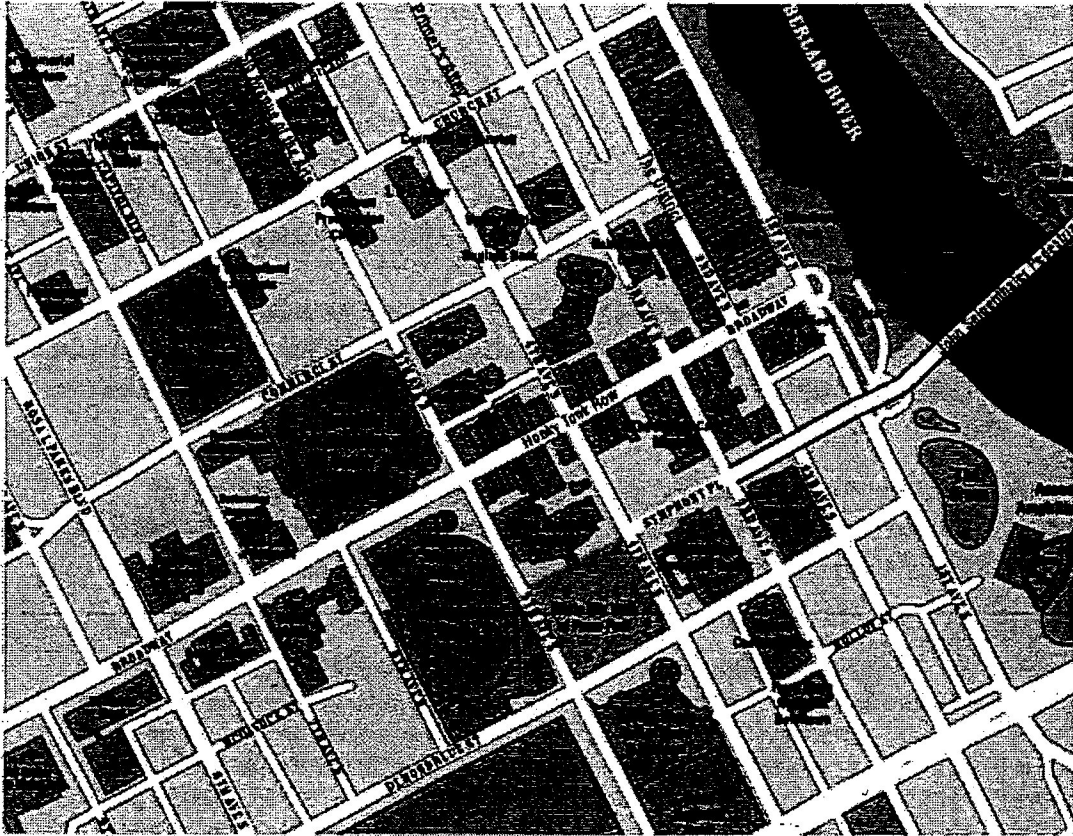


Navigating through Downtown Nashville



We recommend staying off of Broadway after 6:00 PM but stay in the Broadway/South of Broadway district because it's less "local" than the north end. And definitely check out Honky Tonk Row!

About the Walk of Fame

The Music City Walk of Fame on Nashville's Music Mile is a landmark tribute to those from all genres of music who have contributed to the world through song or other industry collaboration and made a significant contribution to the music industry with connection to Music City.

Gibson Guitar, the world's premiere musical instrument manufacturer with headquarters in Nashville, is the founding sponsor of the Music City Walk of Fame.

Inductees are announced and honored at a special ceremony with a permanent platinum-and-granite, star-and-guitar sidewalk marker. Inducted honorees include: Boudleaux & Felice Bryant, Fisk Jubilee Singers, Reba McEntire, Ronnie Milsap, Roy Orbison, Kenneth Schermerhorn, The Crickets, Emmylou Harris, John Hiatt, Wynonna Judd, Frances W. Preston, Michael W. Smith, Buddy Killen, Barbara Mandrell, Vince Gill, Bob DiPiero, Rodney Crowell and Jimi Hendrix.

You can see the stars in Walk of Fame Park on Demonbreun Street between 4th & 5th Avenues - located at the base of the Music Mile in downtown Nashville. The stars lie in the Walk across the street from the Country Music Hall of Fame and Museum, between the Schermerhorn Symphony Center and Bridgestone Arena.

The Music City Walk of Fame will recognize members of the Walkway of Stars with a commemorative marker. The Walkway of Stars honors country performers of national reputation elected by a majority of the Country Music Hall of Fame and Museum's Board of Trustees.

About the Music Mile

"The Music Mile" is roughly a one-mile stretch which connects downtown to Music Row. Heading west from the Schermerhorn Symphony Center, you'll encounter nearby neighbors such as the Country Music Hall of Fame and Museum, the Bridgestone Arena, the Tennessee Sports Hall of Fame and Museum, and the soon-to-be-under-construction Gospel Music Hall of Fame and Museum. Just a bit further on The Music Mile are the ever-changing galleries of the Frist Center for the Visual Arts, and down the road you'll find vibrant new entertainment, restaurant and shopping venues on Demonbreun Street and the Music Row Roundabout. The Roundabout, site of the imposing Musica sculpture and adjacent to Owen Bradley Park, serves as a gateway to the music industry that has collected on 16th and 17th Avenues South, including RCA Studio B.

About Nashville Music Garden

The seed for the idea of the 2,700-square-foot public garden was planted when country music legend Barbara Mandrell gave her namesake rose to her friend, Pat Bullard, a LikeWorks Foundation Trustee, who recognized it as a way to acknowledge the music and artists synonymous with Nashville and also to beautify Music City. In her research, she found that over three dozen roses were named for Nashville artists, songs or industry leaders. These include Minnie Pearl (1981), Barbara Mandrell (1990), Brenda Lee (Williams Variety 1991) and Pam Tillis (2003), but the "celebrity roses" had never before been housed together in one garden for the public to view.